

Chris A. Paschke, CPF GCF
Designs Ink
785 Tucker Road, Suite G-183
Tehachapi, CA 93561
P: 661.821.2188
C: 661.717.5596
chris@designsinkart.com
<https://designsinkart.com/library.shtml>

CLASS: **SESS-52** Lecture/PPT (2 hour)
Saturday, January 25, 1:00-3:00pm

TITLE: **Design Elements: Tints, Tones, and Shades 2025**

DESCRIPTION: Designing with neutrals, including grays, browns, and shades of primary colors, can produce sophisticated, high-end, dynamic results. The trends in art embracing black, white, and all gray tones alone can allow for infinite possibilities. As a follow-up to Understanding Color, this class goes more in-depth with color from moulding to mats and other design options with natural tones. Colors of the year will be presented along with home décor trends and how it all affects framing.

BIOGRAPHY: She has been Mounting Editor for Picture Framing Magazine since 1991, featuring her monthly column "Mastering Mounting", also PFM author of "The Elements of Design", "The Design Process", "Digital Directions" and has a number of self published books including:

*The Mounting And Laminating Handbook, **THIRD EDITION**, 2008*

*The Mounting And Laminating Handbook, **SECOND EDITION**, 2002*

Creative Mounting, Wrapping and Laminating, 2000

The Mounting And Laminating Handbook, 1997

RESOURCES: Paschke, "Color & Art Trends 2025", Picture Framing Magazine, January 2025
Paschke, Chris A., Paschke Online, <https://designsinkart.com/library.shtml>
"Design Elements", PFM color series, 2018-2019
"The Essence of Design", PFM, 12 part series, 2000-2001
"Design And Critique", PFM series, 1997
"The Design Process", PFM, 12-part series, 1994
Articles by Subject page: West Coast Art & Frame PowerPoint and PDFs
Perkins, Greg. GREAT FRAME DESIGNS. New Jersey: PFM Books, 2009.

OTHER WCAF 2025 CLASSES:

Mastering Mounting: **Creative Mounting & Laminating**,
SESS-55 Sunday, 8:30-11:00am

Mastering Mounting: **Handling Digitals**,
SESS-56 Sunday, 12:30-2:30pm

DESIGN ELEMENTS: Tints, Tones & Shades 2025

I. Intro and Review

Neutrals of black, white, all browns, and rich toned hues
Metallic Accents of gold, bronze, copper tones and silver accents
Lots of art = seen as groupings, rugs, wallpaper

II. Color Wheel Review and Theory

HUE: Name of pure color indicating position on wheel.

SHADE: Color plus black; darker than its normal value.

TINT: Color plus white; lighter than its normal value.

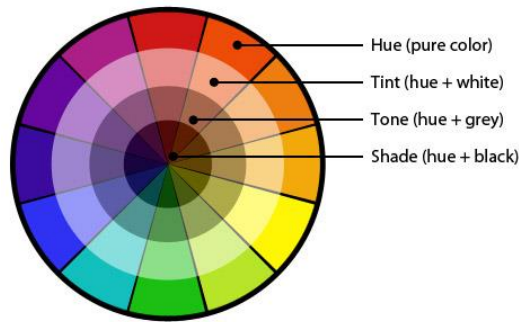
STONE: Color plus gray.

NEUTRALS: Surface colors which do not reflect any single wavelength but ALL at once.

NEUTRAL GRAY: Three primaries mixed together; black plus white.

MONOCHROMATIC: One color with various values added of black, white and gray.

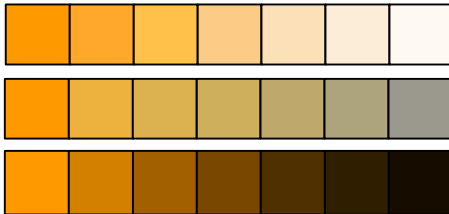
ACHROMATIC NEUTRALS: Colorless scheme of black, white and gray.



III. Neutral Color Theory

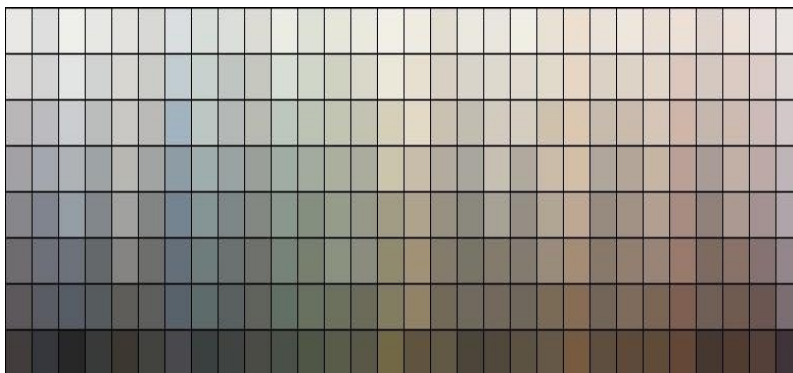
Tints, Tones, Shades

Black, white and gray have always been neutrals, now brown is added
All tinted, toned and shaded colors are also neutrals



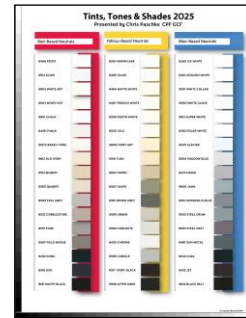
What's a Neutral?

Every color on the color wheel has a tint and shade in the color spectrum, which is a neutral.



Warm, Cool Hues
 Sherwin Williams Wheel
 Paint Samplers

Red, Yellow Blue Color Bases
 Tints, Tones, Shades samplers
 Crescent Brands 2025, Bainbridge 2017 (if possible)



IV. Neutrals in Framing

White as a Neutral
 White on white is museum appearance = neutral on neutral does the same
 Asian theory states the blank white page is a complete work of art
 Framed samples of traditional vs. contemporary designs

Black as a Neutral
 Black mat designs with assorted accents
 Tiered mats, fillets, floated art
 Black/neutrals as a grounding for bright art
 B&W photography
 Pale grayed etching with pastel French panel

Metallic Neutral

V. Neutral Monochromatic Palettes

Monochrome Color Wheel
 As Hues and Tints
 What's a Neutral?

Monochromatic/Achromatic Samples
 Grayed Color Tones in Art
 Gray Monochrome Art
 Brown Monochrome Art
 Home Décor



VI. Interior Design Trends for 2025

Biophilic - Plants, water features, natural light, wood, stone, natural fibers, and nature-inspired.
 Minimalism - Scandi and Japandi natural materials, neutral palette, soft textiles and warm lighting.
 Retro - Vintage old and new elements combine to create unique and eclectic interiors.
 Maximalism - Bold colors, intricate patterns, and textures bordering on over saturation.
 Textures - Weathered wood, nubby linen, rattan, woodgrain, metallics.
 Wallcoverings - Art is on ceilings, floors, walls, stairs.
 Décor Colors - Black, white, brown everything, from mushroom brown to taupe, mocha, and espresso.

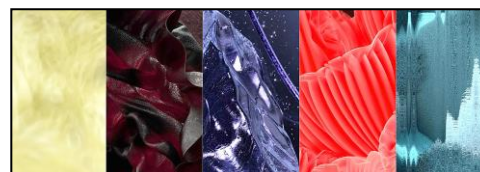
VII. Colors of the Year

International colors from Coloro + WGSN
 Coloro a color system based on hue, lightness and chroma
 WGSN is the World's Global Style Network

Spring/Summer
Future Dusk (COTY)
Transcendent Pink
Aquatic Awe
Sunset Coral
Ray Flower

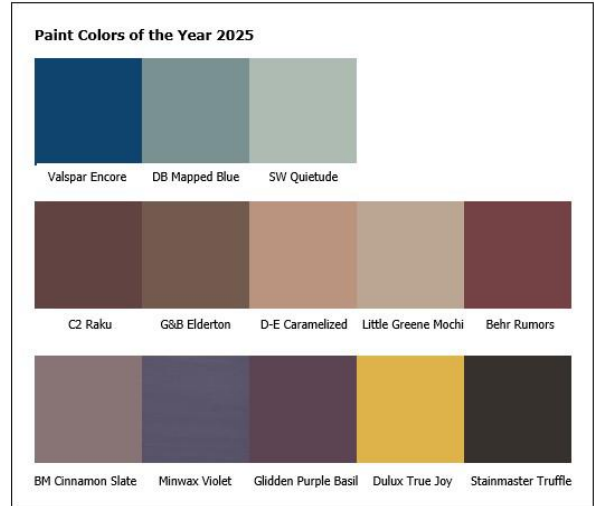


Fall/Winter
Celestial Yellow
Cherry Lacquer
Future Dusk
Retro Blue
Neon Flare



Paint Colors 2025

Valspar = *Encore*
Dutch Boy = *Mapped Blue*
Sherwin Williams HGTV = *Quietude*
C2 = *Raku*
Graham & Brown (UK) = *Elderton*
Dunn Edwards = *Caramelized*
Little Greene (UK) = *Mochi*
Behr = *Rumors*
Benjamin Moore = *Cinnamon Slate*
Minwax = *Violet*
Glidden (PPG) = *Purple Basil*
Dulux (UK) = *True Joy*
Stainmaster = *Truffle*



Pantone 2025 =

